

Key

- Representative Noise Sensitive Receiver (Assessment point for Tsung Yuen Ha (HK1) is selected at the boundary of the Village Zone)
- Village Zone in accordance with Figure 4.59 Recommended Development Plan of Planning Area 4 of the Land Use Planning for the Closed Area- Feasibility Study (Agreement No. CE 60/2005 (TP))
- Noise Study Area
- ▨ Project Site

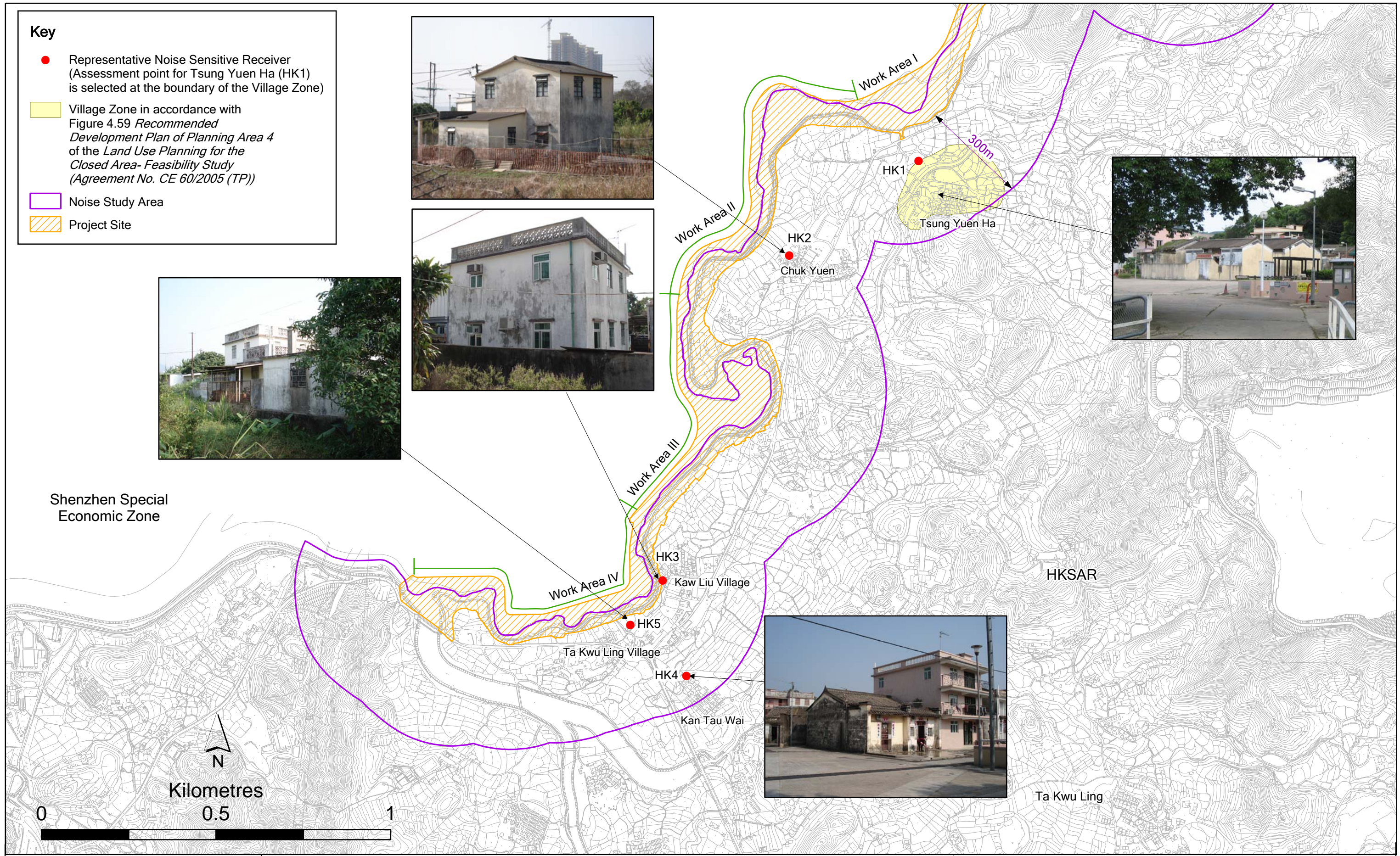


Figure 5.2

Location of Representative Noise Sensitive Receivers